

ED connect

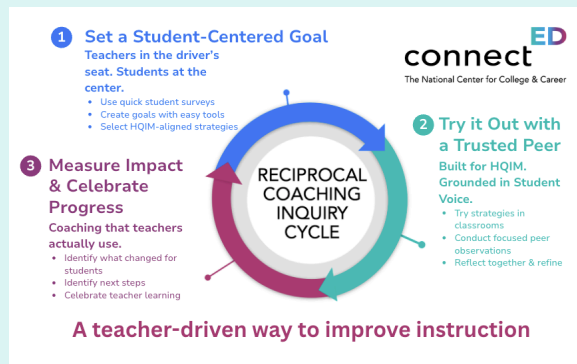
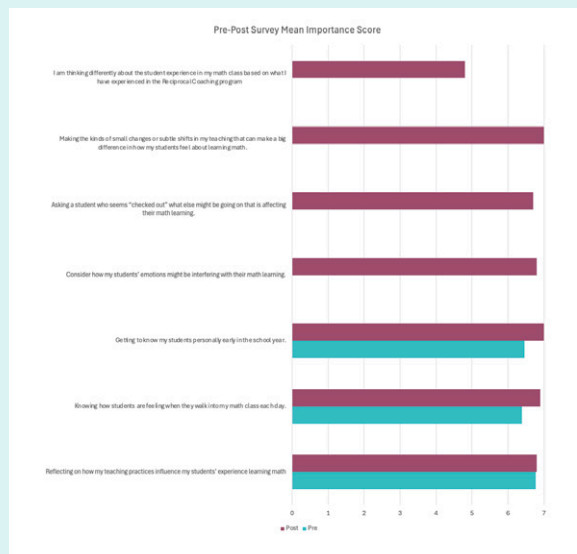
The National Center for College & Career

Top learnings about impact

1. The messages helped us take on a key challenge in PD and coaching: teachers' defensiveness when asked to reflect on how their own assumptions and practices negatively impact students. We found teachers were far more open to self-reflection when (1) informed by video-based teacher and student voices, and (2) processing these messages with a trusted colleague.
2. Teachers shifted their interpretation of student "disengagement" as a lack of interest to a sign of frustration, feeling like they are the only one confused, a desire to share a different approach to a problem, and systemic failures including a lack of permanent math teachers. Elementary teachers shared that some "behavioral challenges" were resolved when students were invited to share their unique approach to a problem; HS teachers decided to remind students their math score is a reflection of what they know now, "not who they are."
3. The Reciprocal Coaching program facilitated significant shifts in approaches to building relationships. During the program, teachers realized that building connections with some students requires time outside of instruction, and brainstormed ways of breaking through students' "protective shells" and ways to encourage students to ask more questions.

About our project

We integrated math narrative messages (student agency, emotions, reassessing assumptions, and relevance) into our Reciprocal Coaching program, a peer-to-peer structure for teachers to reflect on their practice together. We worked with 8 teacher pairs in 2 districts and measured impact with surveys, reflective prompts, and focus groups.



Top learnings about process

1. Working closely with a trusted colleague who is also trying out new instructional approaches helps teachers acknowledge internalized assumptions and "categorizations" of students.
2. Strongest messages occur early and overlap with later messages; repetition helps.
3. It is powerful when participants reflect and respond to each others' ideas in writing, giving participants an opportunity to contribute and build on others' ideas.



Three short videos of teachers reflecting on their experience in the Reciprocal Coaching program, highlighting relationship-building and transparency with students.

